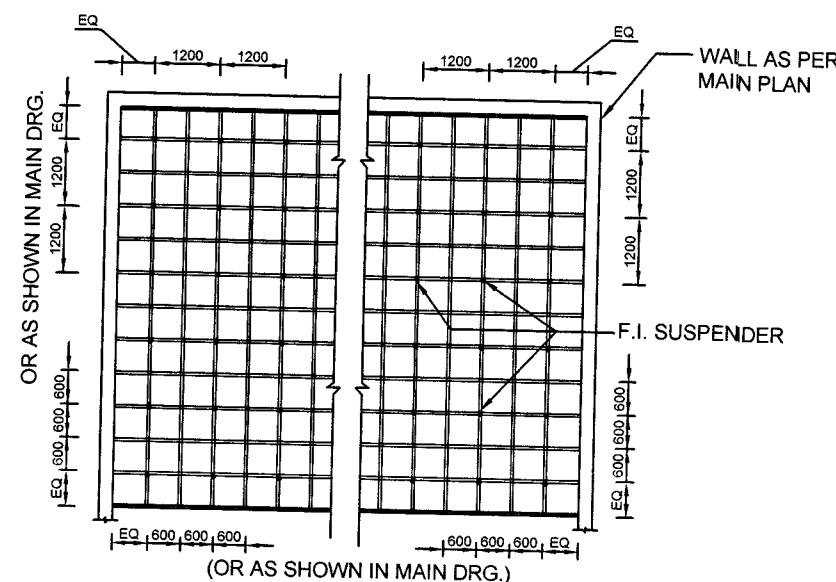


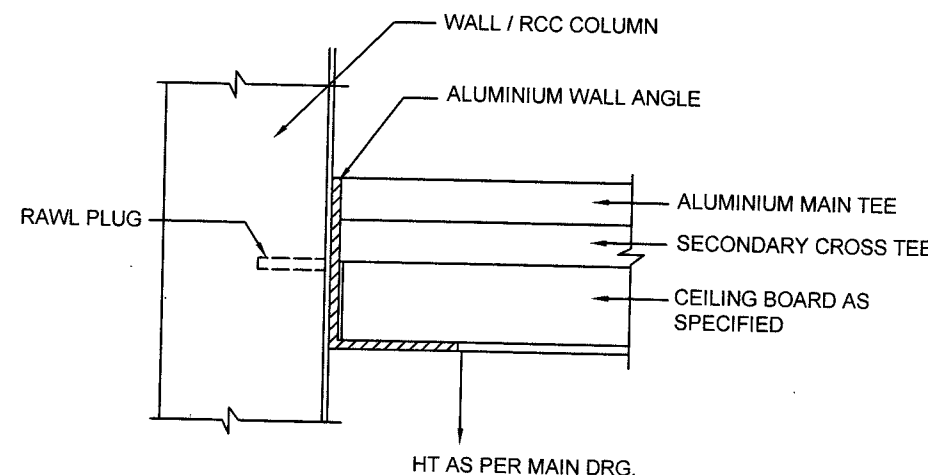
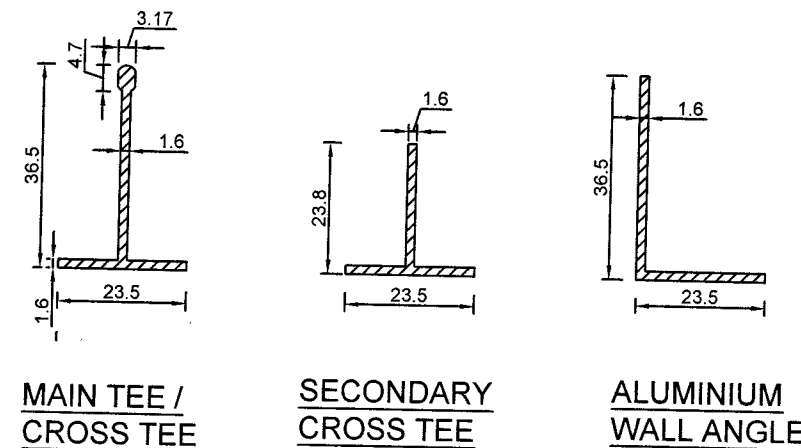
ISOMETRIC VIEW

(SHOWING INTERLOCKING ARRANGEMENT WITH CROSS TEE & -SECONDARY CROSS TEE. OTHER TYPE JUNCTION MAY ALSO BE ADOPTED & APPROVED BY EXECUTIVE INCHARGE AT SITE)

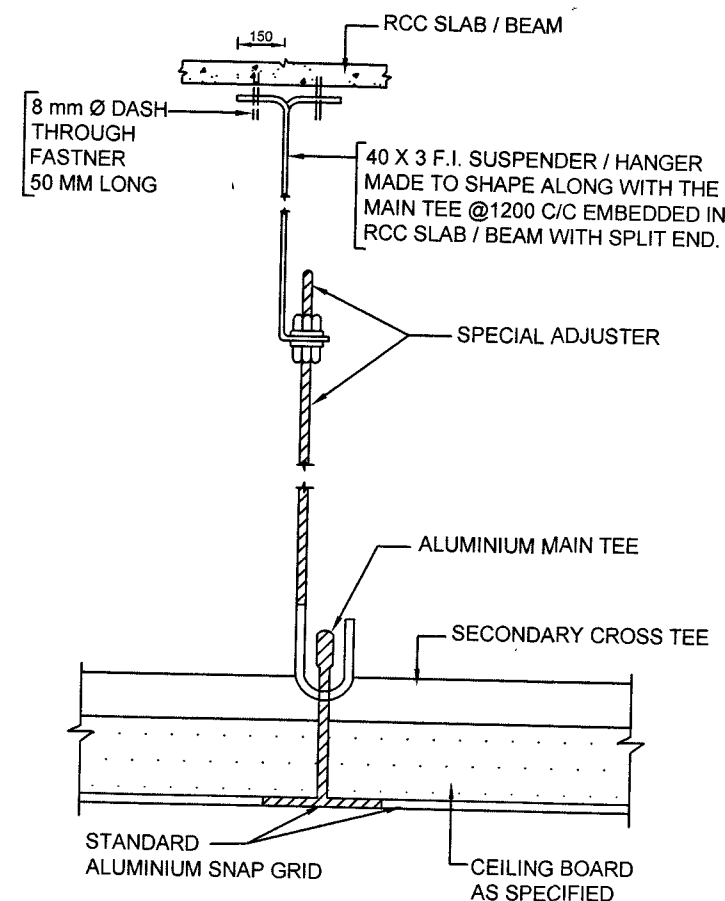
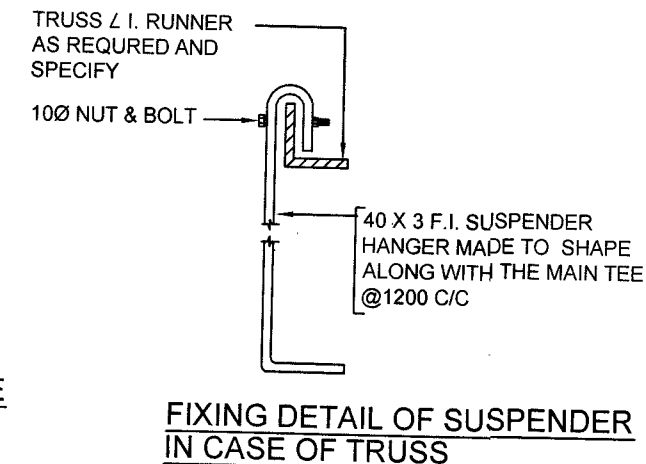
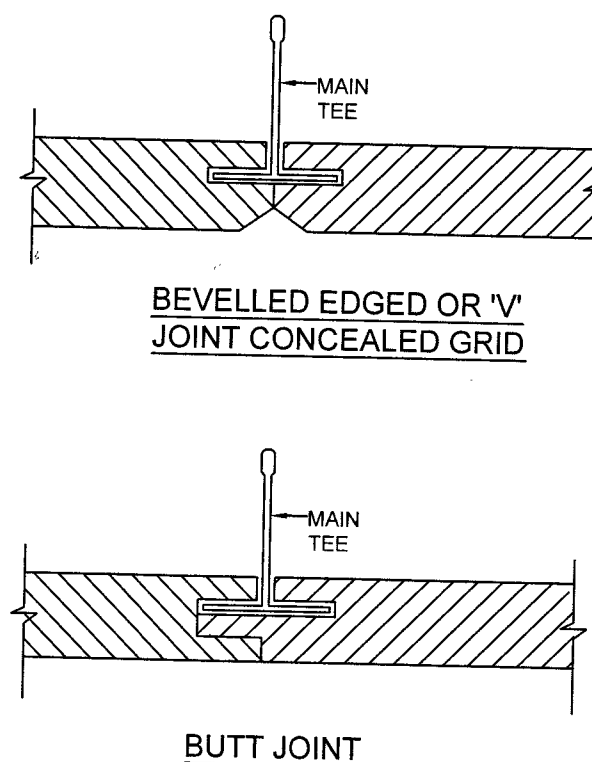
DETAIL OF STANDARD ALUMINIUM SNAP GRID



TYPICAL FALSE CEILING PLAN



TYPICAL DETAIL AT WALL



TYPICAL DETAILS AT CENTRE

NOTES

- 1 CONTRACTOR TO CHECK & VERIFY ALL DIMENSIONS BEFORE EXECUTION OF THE WORK.
- 2 FIGURED DIMENSIONS SHALL BE FOLLOWED.
- 3 ALL DIMENSIONS GIVEN ARE IN MILLIMETERS.
- 4 EXECUTIVE AUTHORITY SHALL CHECK THIS DRG BEFORE TAKING EXECUTION IN HAND.
- 5 DIMENSIONS OF FIXTURES AND FITTING DETAILS SHOWN ARE STANDARD AND MINIMUM TO BE FOLLOWED. SIZE AND DETAILS MAY VARY FOR DIFFERENT MANUFACTURERS. HENCE DETAILS SHALL BE FOLLOWED AS PER LATEST MARKET TREND AND MANUFACTURER INSTRUCTION AS APPROVED BY THE ENGR-IN-CHARGE DURING EXECUTION.
- 6 MATERIALS / TYPE AND SIZES OF THE TILES SHALL BE AS SPECIFIED IN SCH OF FINISHES / PS.

S No	DATE	DESCRIPTION	INITIAL
------	------	-------------	---------

REVISIONS

DETAILS OF FALSE CEILING

Date	20 - 10 - 2022	CHIEF ENGINEER (NAVY)	Sheet No
Drawn	NB SUB VIJAY	VISAKHAPATNAM ZONE	1 / 1
TCD	—		
CKD	—		
Scale	NTS	DRG NO : CEVZ / 2022 / TD -30	

K. S. V. AAD(Arch)

Jt Dir (Arch)

Director (Arch)
For Chief Engineer